

Erledigt

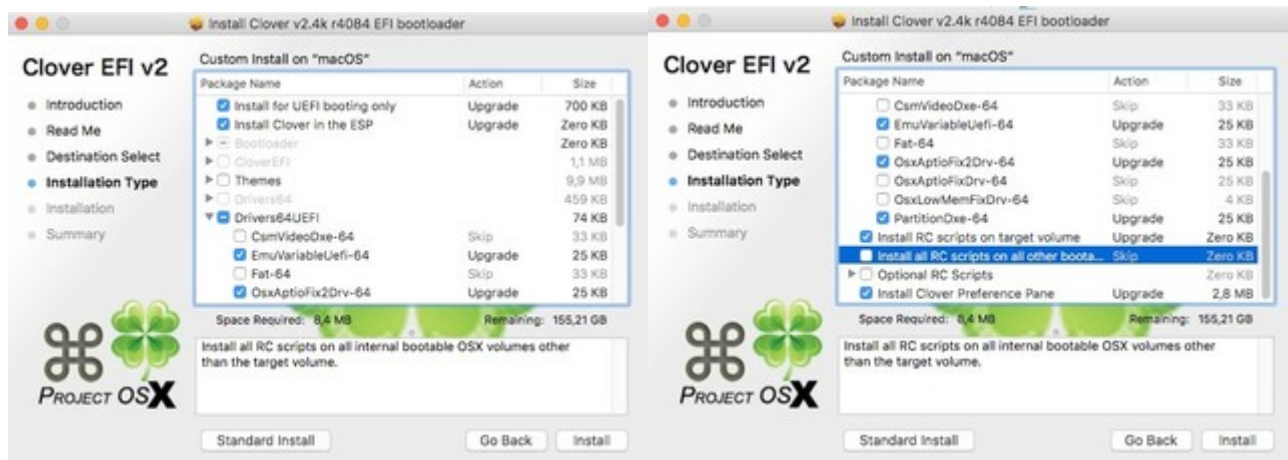
EL Capitan Installation auf Lenovo Yoga 900s

Beitrag von „al6042“ vom 12. Juni 2017, 23:23

I would say it is an interesting challenge...

The CPU and iGPU is used in an MacBook9,1 from Early 2016.

Do you have a family member or friend with an macOS device like iMac, MacBook, MacBookPro or MacBookAir?



I tried to prepare the necessary kexts for the folder /EFI/CLOVER/kexts/Other plus two different config.plists.

- config.install.plist is for the installation itself, since it contains a fake ig-platform-id to be able to start the HD515 with out graphics support (just VESA-mode)

- config.prod.plist might be used after successful install to try to get full graphic support.

Put these files on the hidden EFI-partition of the macOS Installstick into the directory /EFI/CLOVER...

You will get no Wifi connection with the Broadcom 43A3 (a/b/g/n/ac), since there is currently no support for that device.

try to get another NGFF Wifi Card like the DELL DW1830 which belongs to the following category:

https://wikidevi.com/wiki/Broadcom_BCM94352HMB

You should be able to switch the wifi cards be following the attached Hardware Maintenance Manual.

But that's only a suggestion... if you want to go on this adventure it's your choice alone... 😊